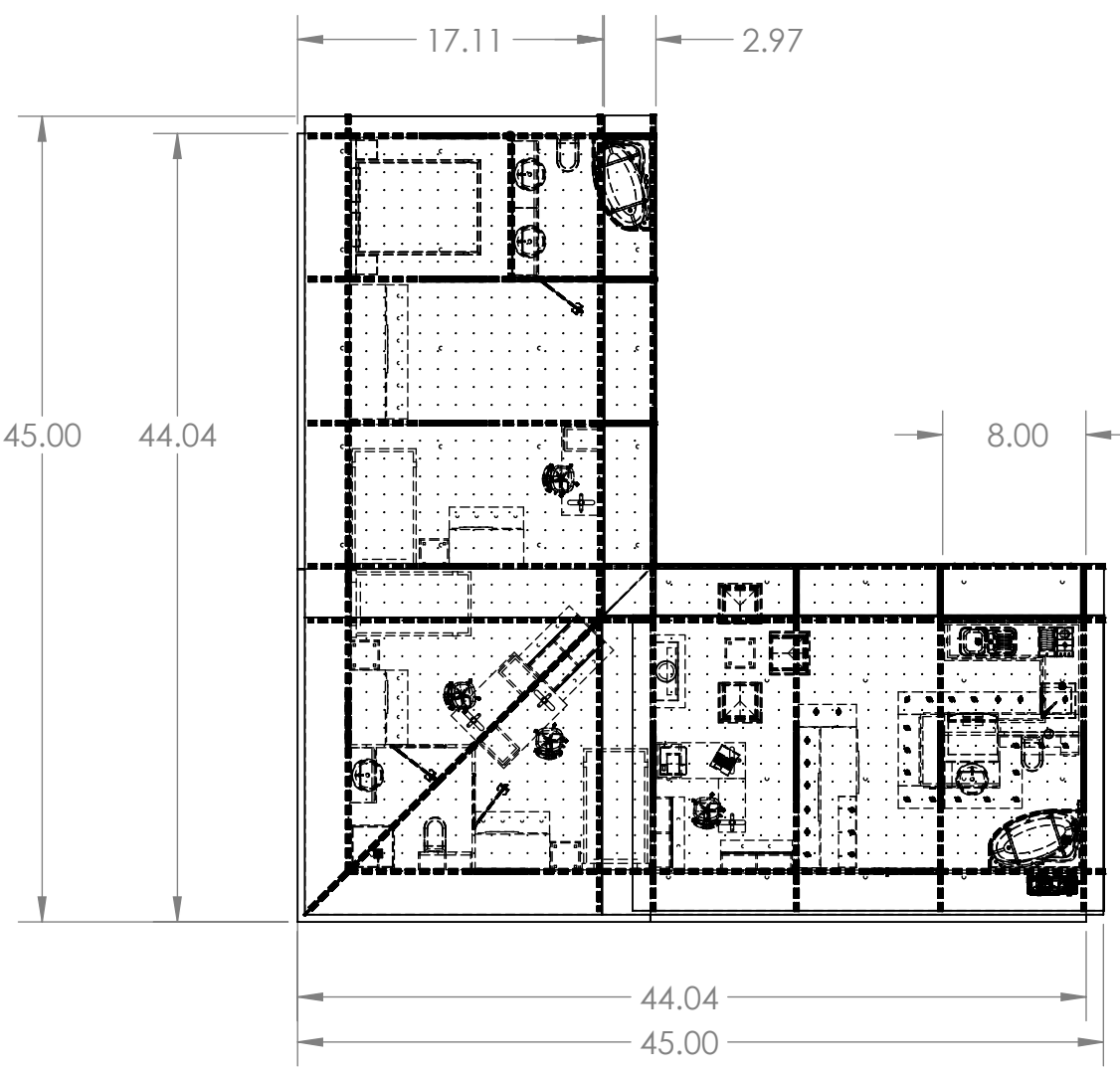
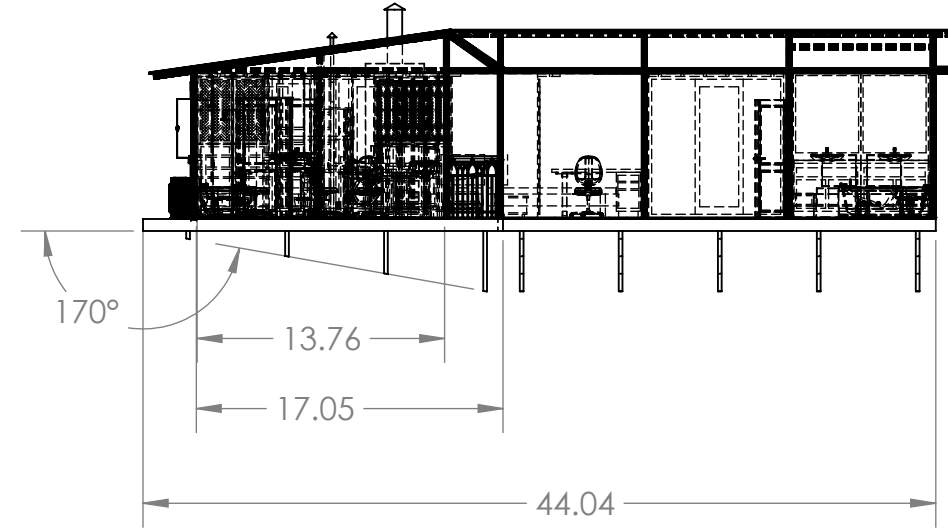
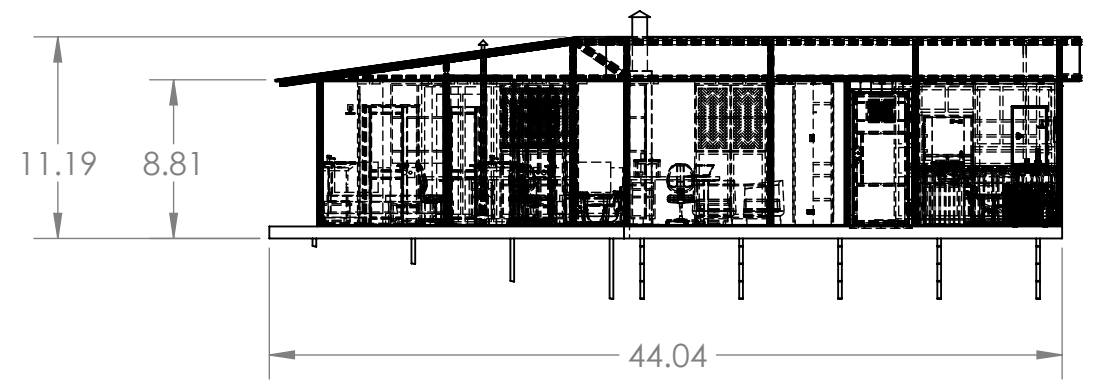


4

3

2

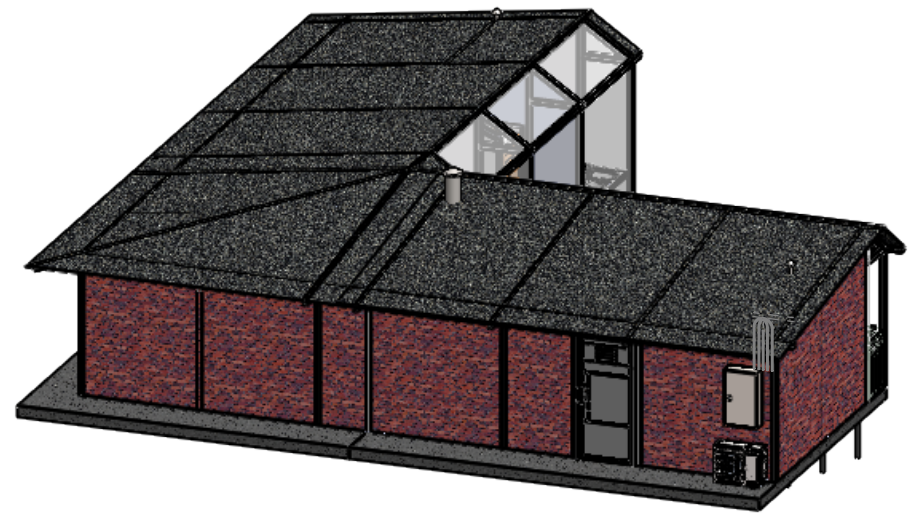
1



Laplanda house Model C
 Construction material:
 House foundation – concrete
 Frame – aluminum extrusions
 Roof - aluminum sheeting
 Walls and ceiling - plywood sections
 Front - vacuum glass sections

Total floor area - 1100sq.ft.
 Kitchen – 100sq.ft.
 Living room – 150sq.ft.
 Bedroom1 - 130sq.ft.
 Bedroom2 – 200sq.ft.
 Bedroom3 - 100sq.ft.
 Bedroom4 - 100sq.ft.
 Bath1 – 80sq.ft
 Bath2-80sq.ft
 Bath3-80sq.ft
 Lobby – 80sq.ft

Laplanda house is perfect as ADU, that could be developed on any legal lot or parcel if it met the required setbacks and lot coverage limits; local governments should not mandate a minimum lot size for ADUs. So that lot coverage requirements do not preclude ADUs from being built on smaller lots, local governments should review their lot coverage standards to make sure they don't create a barrier to development. Additionally, some jurisdictions allow greater lot coverage for two ADUs.
 Any legal nonconforming structure (such as a house or outbuilding that doesn't meet current setback requirements) should be allowed to contain, or be converted to, an ADU as long as the development does not increase the nonconformity and it meets building and fire code.



PROPRIETARY AND CONFIDENTIAL
 THE INFORMATION CONTAINED IN THIS DRAWING IS THE SOLE PROPERTY OF LAPLANDA. ANY REPRODUCTION IN PART OR AS A WHOLE WITHOUT THE WRITTEN PERMISSION OF LAPLANDA IS PROHIBITED.

UNLESS OTHERWISE SPECIFIED:		NAME	DATE	TITLE: Laplanda House Model C	
DIMENSIONS ARE IN FEET		DRAWN	Alex Kor		9/3/23
TOLERANCES:		CHECKED			
FRACTIONAL ±		ENG APPR.			
ANGULAR: MACH ± BEND ±		MFG APPR.			
TWO PLACE DECIMAL ±		Q.A.			
THREE PLACE DECIMAL ±		COMMENTS:	BALTA Silicon Valley Affordable Home Project		
INTERPRET GEOMETRIC TOLERANCING PER:	MATERIAL	FINISH	SIZE B	DWG. NO. Laplanda 24	
NEXT ASSY	USED ON	APPLICATION	SCALE: 1:128	REV 024	
DO NOT SCALE DRAWING		WEIGHT:		SHEET 1 OF 1	

4

3

2

1

B

B

A

A